

Streamlined workload  
management

Testing handled with ease

STATs prioritized fast

ARCHITECT®

i1000SR\*



WWW.INSIGNIABIOMEDICAL.COM



Lifting the

WWW.INSIGNIABIOMEDICAL.COM  
productivity

of labs like yours

\*In development

 **Abbott**  
A Promise for Life

Manage your workload  
with

# less effort

WWW.INSIGNIABIOMEDICAL.COM



WWW.INSIGNIABIOMEDICAL.COM



WWW.INSIGNIABIOMEDICAL.COM

### Streamlined workload management

- Continuous access to reagents, samples and supplies
- 65 sample load capacity
- 13 universal bays; up to 7 customizable priority bays
- Refrigerated reagent carousel features 25 reagent positions (*100 test kits*)
- Reagents stable onboard for up to 30 days (*tracked in hours*)

### Testing handled with ease

- Fewer workflow pauses
- Simple and easy to operate
- Low maintenance (10 minutes of daily maintenance)
- Intuitive ARCHITECT software

### STATs prioritized fast

- Immediate STAT processing
- Automatically run priority tests first
- Consistent turnaround time of 15.6 minutes on STAT assays
- Up to 7 customizable priority bays



## ARCHITECT® i1000SR®

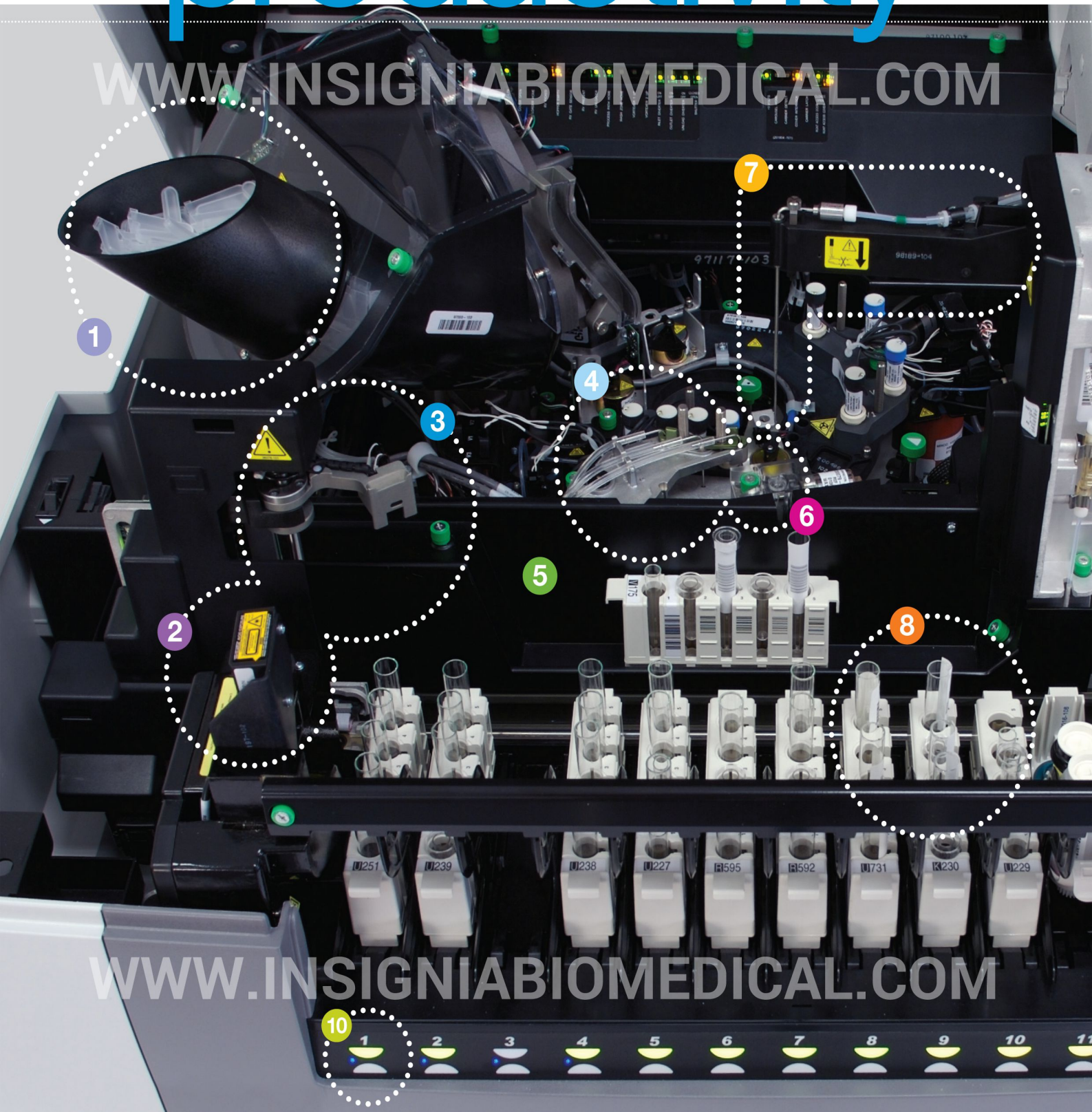
An agile immunoassay analyzer specifically designed for the complex workload requirements of labs like yours.

\*In development

From the ground up,  
built for

# productivity

WWW.INSIGNIABIOMEDICAL.COM







WWW.INSIGNIABIOMEDICAL.COM

Continuous access reagent loading/unloading and customizable sample bays for **enhanced productivity**

Exceptional workload management for **timely and accurate patient results**



1 **Reaction vessel hopper** (300 RV capacity)

2 **Bar code reader** (reagents and samples)

3 **Robotic Sample Handler (RSH) transport robot**

4 **Wash zone**

5 **Sample aspiration platform**

6 **Patented probe wash cup**

7 **Pipettor**

8 **RSH universal bays** (65 sample load-up capacity; 13 universal bays, including up to 7 customizable priority bays)

9 **Refrigerated reagent carousel** (features 25 reagent positions, 100 test kits; reagents stable onboard for up to 30 days)

10 **RSH intuitive indicator lights**

WWW.INSIGNIABIOMEDICAL.COM

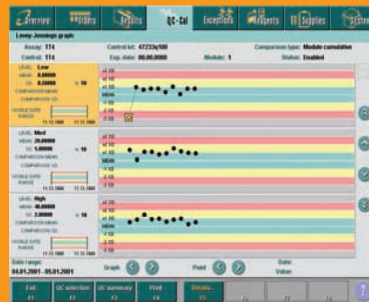
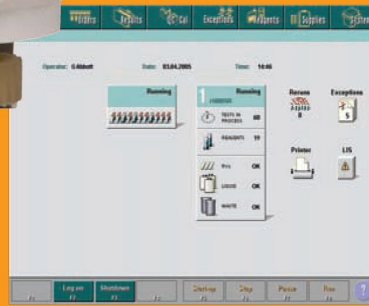
ARCHITECT®: Rise above

# everyday challenges

WWW.INSIGNIABIOMEDICAL.COM



ARCHITECT i1000sr<sup>®</sup>  
reagent carrier



ARCHITECT software

True Family  
Commonality

The ARCHITECT i1000sr<sup>®</sup>

exemplifies the design philosophy of  
the ARCHITECT family of analyzers

Identical CHEMIFLEX<sup>®</sup> technology,  
100 test kit reagents, assay protocols  
and consumables

Identical ARCHITECT software

Identical universal ARCHITECT  
sample carrier

*The benefits: equivalent patient  
results across all ARCHITECT  
immunoassay instruments and a  
simple, consistent user experience*

WWW.INSIGNIABIOMEDICAL.COM

ARCHITECT  
universal sample carrier



\*In development



WWW.INSIGNIABIOMEDICAL.COM

## Enhanced System and Assay Dynamics

**CHEMIFLEX** technology with flexible assay protocols delivers exceptional detection and improved sensitivity

**New patented wash cup** design and wash algorithm effectively control sample carryover (<0.1 ppm tube to tube)

**Pressure differential technology** enables detection of clots, bubbles and insufficient sample volume to reduce analytical error and improve patient safety

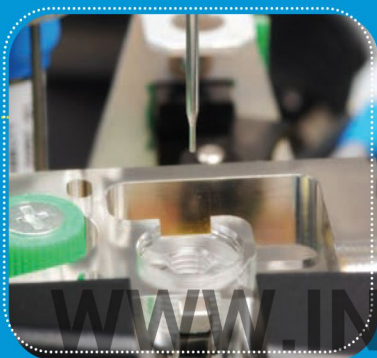
**The benefits:** *certainty and confidence in the clinical results*

## Integration Without Compromise

**Conceived and designed** for future integration with the c4000™\* chemistry analyzer → ci4100™\*

**Fast STATs:** The ARCHITECT Robotic Sample Handler (RSH) provides “load on the fly” continuous access to both reagents and samples and allows the lab to prioritize tests through customizable priority bays

**The benefits:** *handle the most urgent samples first without compromising your routine testing*



ARCHITECT i1000sR\*  
wash cup

WWW.INSIGNIABIOMEDICAL.COM



**ARCHITECT®**

**i1000SR®**

## Product Specifications

[WWW.INSIGNIABIOMEDICAL.COM](http://WWW.INSIGNIABIOMEDICAL.COM)

<b>Physical Dimensions</b> (H x W x D)	49" x 59" x 30" (124.5 x 149.86 x 76.2 cm)	
<b>Weight</b>	636 lb/288 kg	
<b>Power Requirements</b>	110-120 volts with 20 amp dedicated circuit breaker or 200-240 volts with 10 amp dedicated circuit breaker Maximum power consumption	1760 VA-2KVA
<b>Environmental</b>	Heat output Operating temperature Noise specifications NCCLS Type II water	2113 BTU/hr average 59-86°F (15-30°C) 55 db Required for reconstituting buffer
<b>Waste</b>	Liquid Output	Floor drain or onboard liquid waste container 1.5 liters/hour maximum
<b>Consumables</b>	Onboard buffer capacity Onboard RV storage Onboard liquid waste capacity Onboard solid waste (RV) capacity Trigger/pre-trigger	12 liter capacity Up to 300 RVs 10 liters 1,000 RVs 3,000 and 9,000 tests
<b>Throughput</b>	Up to 100 tests per hour (1-Step STAT Assays) <i>in development</i>	
<b>Capacity</b>	Sample load-up Reagent	65 sample capacity with up to 35 STAT positions 25, 100 test kits (2,500 tests)
<b>Stability</b>	Onboard reagent	30 days (tracked in hours)
<b>Methods</b>	CHEMIFLEX®	
<b>Sample Types</b>	Serum, plasma, urine	
<b>Sample Tubes</b>	Height: 72-102 mm, Diameter: 8.25-16.1 mm	
<b>Pediatric Sample Cup</b>	Yes (50 µL dead volume)	
<b>Sample Volume</b>	10-150 µL, average: 50 µL	
<b>Automatic Dilution</b>	Yes	
<b>Sample-to-sample Carryover</b>	<0.1 parts per million	
<b>Reagent Type</b>	All liquid ready-to-use	
<b>Sample Clot and Bubble Detection</b>	Yes	
<b>Reagent Pressure Monitoring</b>	Yes	
<b>Remote System Diagnostics</b>	Yes, AbbottLink®	

[WWW.INSIGNIABIOMEDICAL.COM](http://WWW.INSIGNIABIOMEDICAL.COM)

\*In development

ARCHITECT, i1000SR, AbbottLink and CHEMIFLEX are registered trademarks of Abbott Laboratories.  
c14100 and c4000 are trademarks of Abbott Laboratories.

[www.abbottdiagnostics.com](http://www.abbottdiagnostics.com)  
1-800-323-9100

© 2007 Abbott Laboratories 98-1338/R1-5 Apr 2007 Printed in USA

 **Abbott**  
Diagnostics